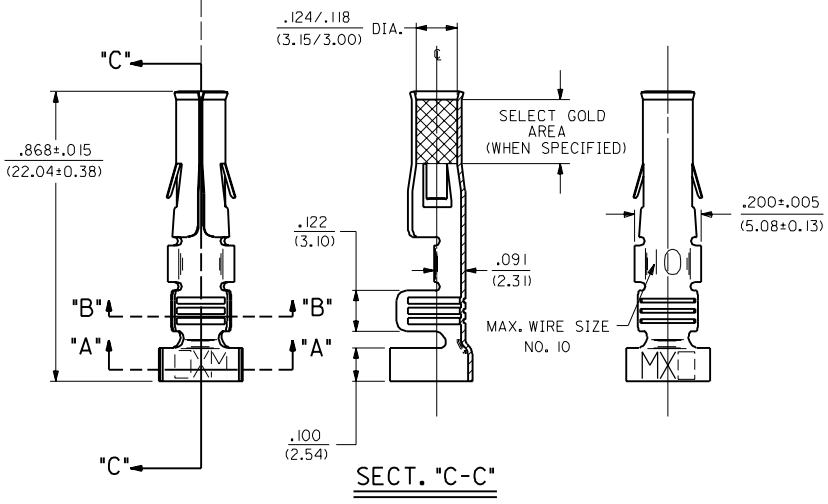
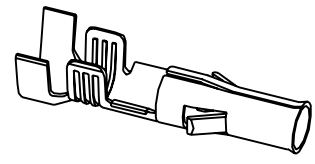
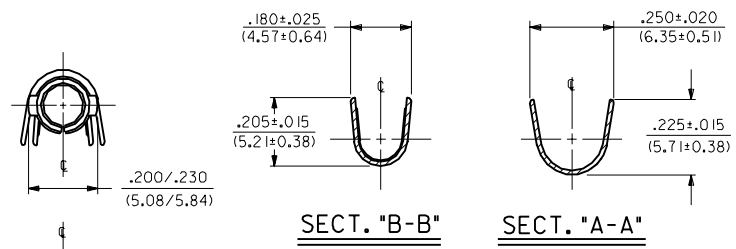
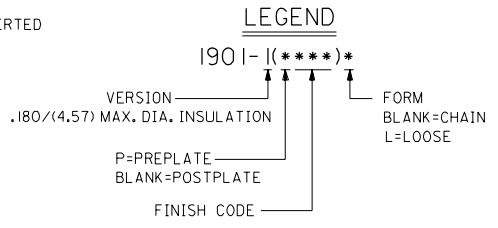


PART NO.	ENG. NO.	FLAT STOCK PART NO.
18-12-1602	1901-I(P901)L	80-02-1302
18-12-1601	1901-I(P901)	80-02-1302



- NOTES:
1. TERMINAL FOR USE WITH .125/(3.17) SERIES HOUSINGS AND WILL ACCEPT 10 THRU 14 AWG WIRE HAVING A .180/(4.57) MAX. DIAMETER INSULATION.
  2. INSERTION FORCE: 6.0 LBS. MAX. WHEN TERMINAL IS INSERTED INTO .125/(3.17) DIA. CORE HOLE.
  3. PULL OUT FORCE: 30 LBS. MIN. RETENTION IN HOUSING .

FINISH CODES:  
901 HOT TIN DIP .000020/(0.0005) MIN.



MATERIAL NOTES:  
1. CARTRIDGE BRASS, ALLOY #C26000;  
.013/(0.33) THICK, SPRING TEMPER

DIMENSIONS SHOWN METRIC (INCH)		UNLESS OTHERWISE SPECIFIED TOLERANCES: ANGULAR ± .04° TO 10°		REVISE ONLY ON CAD SYSTEM	
INCH	METRIC				
3 PLACE ± .010	---				
2 PLACE ± .014	± 0.25				
1 PLACE ---	± 0.35				

TITLE: CRIMP TERMINAL, FEMALE, .125/(3.17) DIA 10-14 AWG .180/(4.57) DIA. INSUL.

PART NO. 1901-I-1

MOLEX INCORPORATED SHEET NO. 1 OF 1 DATE 6/30/88

DRWG. NO. SD-1901-1

DRWG. BY: CEP DRWG. IN: RW

FILE NAME: S19011X1.DWG

SCALE: 4 : 1

DRWG. APP'D: RAS

THIS DRAWING CONTAINS INFORMATION THAT IS PROPRIETARY TO MOLEX INC. AND SHOULD NOT BE USED WITHOUT WRITTEN PERMISSION. CP C

REV.	SH.	REV.	LTR.	REVISIONS
E3				ADDED ISO VIEW ICR 98-0248 WANG 98-05-20
E2				OBS. -(P555) & -(P555)L ECR U6 0312 9/1/95 RW
E1				X-REMOVE -(P555) ECR U2 0731 5/11/92 RW
E				ADD SELECT AREA ECR LUO 0230 3-5-90 RW
D				REVISE PER ECR U9 1189 11-28-89 TRM
C				REV. & REDRAWN ECR U9 1602 6-13-88 RW